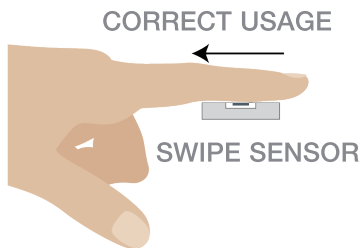


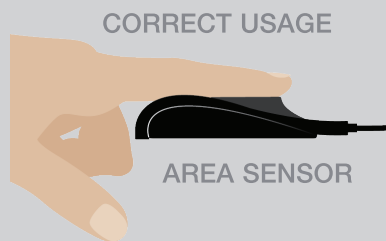
TouchChip Sensor

Usage and Care Guide



USING A SWIPE SENSOR

Place the top joint of your finger or thumb over the horizontal sensor bar, as shown in the picture above. Swipe your finger across the sensor bar in a single smooth motion, applying light pressure and pulling your finger towards the palm of your hand. The pad of your finger should make full contact with the sensor bar during the swipe and should remain centered (not too far left or too far right).



USING AN AREA SENSOR

To scan your fingerprint, place (do not swipe) your finger or thumb firmly onto the capture area of the sensor. The pad of your finger should be centered on the capture area while the top and bottom of your finger should make contact with the upper and lower part of the sensor's bezel.

TAKING CARE OF YOUR FINGERPRINT SENSOR

The fingerprint sensor while tolerant of residues left on the sensor, performs optimally when kept clean!

Carefully follow the recommendations below and your sensor should give you years of reliable service.

The cleaning instructions below apply to both swipe and area sensors.

PROCEDURES FOR CLEANING

Instructions for Using Cleaning Solutions

1. Use Ethanol or Isopropanol in concentration of **less than 50%**. Windex® can also be used as a cleaning solution.
2. Apply the liquid to a soft lint-free material (same as used to clean eye glasses or camera lenses) or to a cotton swab and gently wipe the capture area.
3. DO NOT spray pour any liquid directly on the capture area.
4. DO NOT submerge the sensor in liquid.
5. DO NOT rub the capture area with any abrasive material, including paper.

Learn more at www.crossmatch.com