

# Mobile Operations Biometrics Software (MOBS)

Configurable Biometric Enrollment Software



## FEATURES AND BENEFITS

- Biometric image Auto Capture ensures quality
- Predefine and configure inputs for expedited processing
- Intuitive User Interface reduces training requirements

## PRODUCT DESCRIPTION

The rapid proliferation of biometric technology necessitates the need for intelligent systems. Ease of use is a must for the military, law enforcement and others who need to rapidly process subjects' identities in the field. Crossmatch™ offers advanced biometric identity management systems delivering intelligent, multimodal biometric capability to automatically capture fingerprint, facial and iris images, as well as customizable biographical data input.

Mobile Operations Biometric Software (MOBS) allows users to streamline applicant enrollment and criminal booking procedures in high-risk environments, such as designated hot zones or areas of civil unrest. The innovative software solution empowers users to predefine and configure situational data and utilize pre-set criteria to enroll subjects. This frees system operators to focus on other issues, such as adhering to safety protocols, while maintaining the ability to obtain forensic-quality fingerprints, facial images or iris scans.

## ABOUT CROSSMATCH

Crossmatch helps organizations solve their identity management challenges through biometrics. We empower governments, law enforcement agencies, banks, retailers and other enterprises to mitigate risk, drive productivity and improve service levels. Our solutions are built on consultative expertise, refined best practices and the application of advanced biometrics technologies. Crossmatch understands the forces of change in the markets we serve and we develop solutions that anticipate customer requirements. Our network of consultative and technical service experts collaborate with customers in more than 80 countries worldwide.

Learn more at [www.crossmatch.com](http://www.crossmatch.com)

# Mobile Operations Biometrics Software (MOBS)

Configurable Biometric Enrollment Software



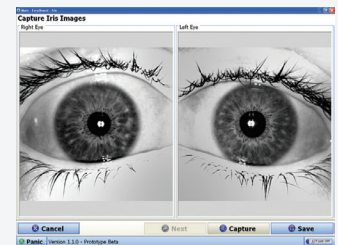
## MOBS SYSTEM PROCESS

Pre-Mission Preparation	Identify new tasks or modify existing missions, such as collecting biometrics in a military hot zone. Customize the data capture process with user-defined, pre-set parameters for biometric and demographic information, saving valuable time in the field. Preload stored biometric data or watch lists. Record the GPS location of the.
In the Field	Rapidly capture high quality fingerprints, facial and iris images. Record subjects' biometric, demographic and passport/ID card information using an intuitive touch screen. Submit EBTS-compliant files for matching against remote databases. Receive accurate and actionable in-filed responses - enhancing the efficiency of the identity management program.

## FEATURES AND BENEFITS

Intelligent Auto Capture	Effortlessly capture fingerprints, facial and iris images and automatically ensure image quality; Provides NFIQ scoring for immediate feedback on usability for biometric identification; Validates segmentation for forensic-quality images; Annotates missing or unavailable fingerprint images to notify users
Easy to Use	Presents large textual selections optimized for a touch screen display and soft keyboard
Customizable	Customize landing page displays for selected enrollment workspaces; Pre-define fields based on mission requirements
Expandable	Integrate with IDTrak SOA application, providing matching capabilities for fingerprint and iris images
Document Reader Compatibility	Allows swift and accurate scanning of passport MRZ data; Data retained for future use

Data subject to change without notice



## SUPPORTED HARDWARE

- L Scan® fingerprint and palm print scanners
- Guardian® ten-print scanners
- I Scan® dual iris scanner
- Authenticator document readers
- Crossmatch Jump Kits

### Corporate Headquarters:

Crossmatch  
3950 RCA Boulevard, Suite 5001  
Palm Beach Gardens, FL 33410 USA

[www.crossmatch.com](http://www.crossmatch.com)